



St Wilfrid's NEWSLETTER

Eamonn Selected in National Children's Orchestra

St Wilfrid's are very proud of Eamonn's achievements in the Music World. As a result of his being tutored at school through the Sheffield Music Hub, Sheffield City Council have issued a Press Release on his achievements. See below.

"A Year 5 pupil at St. Wilfrid's Catholic Primary School in Sheffield has been selected to join one of the country's most prestigious groups of young musicians, the National Children's Orchestra. Eamonn Foley, aged 9, started double-bass lessons in January last year and made quick progress, wowing the NCO tutors with his audition in April who said he showed an "exceptional talent". He has now been accepted into the NCO under 10s orchestra. Eamonn also has a keen interest in piano and violin and is a vital member of the Music Hub intermediate Jazz band, who perform regularly around Sheffield. Eamonn attended the NCO Training Academy Summer Course in August last year and is also a member of the NCO Northerlies Regional Orchestra, based in Leeds, and took part in the Winter concert in Manchester in November. Jack Lowe, Music Hub Music Leader said: "Eamonn's success is all down to his hard work, dedication and enthusiasm for music. He has done exceptionally well to reach this stage in his musical career. "He has been a pleasure to teach over the last year and I look forward to continuing to teach Eamonn and will be following his progress on the national stage." Councillor Jackie Drayton, Cabinet Member for Children, Young People and Families at Sheffield City Council, said: "What a fantastic achievement. "I hope Eamonn will inspire other children and young people from across the city to get involved in our wonderful Sheffield Music Hub and the musical activities they provide throughout the year. I look forward to hearing more about Eamonn's achievements as he journeys through his musical dream."



Well done Eamonn!

Prayer of the Week

Dear Lord

We pray in our school community that we may grow to love everyone everywhere.

We pray that all differences may be put aside so that we may live as one with you.

We implore the President of America to follow in Martin Luther King's footsteps to fight for justice and live in peace.

Amen

Orla and Ellie Y5

PRAY
FOR
PEACE

Golden Broom

Well done to Y3/4 class for being awarded this weeks Golden Broom.

Good luck everyone for next week.

Virtual Velodrome

As part of our project with sustrans, Y5, Y5/6 and Y6 took part in a race in the Virtual Velodrome.

We all used the first lap of the track to gain speed and then we were timed for one lap. The fastest time was performed by Ellie in Y6 at 21.38 seconds. Well done Ellie.

Everyone thoroughly enjoyed it.



Early Years Outdoor Area

If you have any of the following items spare at home or know where to get hold of them and are happy to donate we would be extremely grateful.

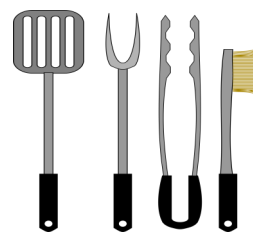
Adult size plastic plates, cups and cutlery e.g. BBQ sets.

Plastic margarine tubs or take away containers.

Children's size safety glasses (maybe dentists could get hold of these?)

With thanks

Early Years Team



Back in Time - Take Part!

A television production company called Wall to Wall produce a variety of programmes, including *Who Do You Think You Are?* (BBC) and *Long Lost Family* (ITV). They also make BBC2's living history strand *Back in Time*; previous series of this include *Back in Time for Dinner* and *Back in Time for the Weekend*, which explored the social history of post-war Britain through previous generations' food and leisure time. Both series followed a modern family as they lived through each decade from the 50s to the 90s with their home, clothes and diet all transformed accordingly. Everything they did was underpinned by historical data that detailed real spending and eating habits of each period.

For their new BBC2 *Back in Time for Tea* series, they are looking for a food loving family to immerse themselves in the lives and diets of working people in Northern England over the last 150 years. It will be an exciting and educational opportunity for a local family to find out about the lives led by previous generations – where they lived, what work they did, what they ate and how they cooked it.

They will be filming the series over the school summer holidays and October half term, so are looking for a local family with two or more children aged 8+ who would be available to film during these periods.

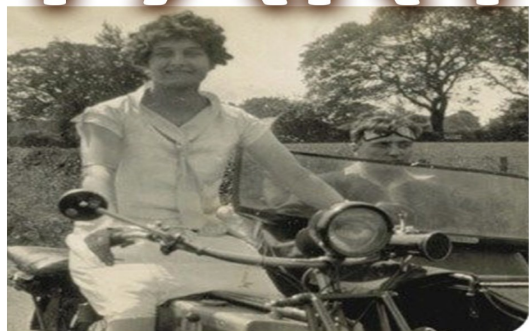
Please see below a casting advert which has information about the series and details on how to apply. Please see a couple of links to articles written by previous contributors about their rewarding experiences from taking part in the series:

<http://www.independent.co.uk/life-style/food-and-drink/features/new-bbc-series-savours-half-a-century-of-food-in-britain-from-vesta-curries-to-nouvelle-cuisine-10071775.html>

<https://www.theguardian.com/media/2016/feb/02/gadget-free-1970s-was-happiest-period-says-time-travelling-tv-family>



BACK IN TIME TAKE PART!



Would you and your family like to go Back In Time for a new BBC series?

The makers of the hit series *Back in Time for Dinner* and *Further Back in Time for Dinner* are looking for a food loving family to immerse themselves in the lives and diets of working people in Northern England over the last 150 years.

If you've always wanted to know how previous generations lived - what work they did, what they ate and how they cooked it – then we would love to hear from you.

Please email backintime@walltowall.co.uk for details on how to apply. Families must be UK residents with a minimum of 2 children aged 8+.

Letter received from Sheffield City Council regarding pavement resurfacing for your information:-

Customer Services

Howden House, Floor 2,
1 Union Street, Sheffield, S1 2SH
Tel: 0114 273 4567
Email: streetsahead@sheffield.gov.uk
www.sheffield.gov.uk/streetsahead
@sccstreetsahead



working
with



Pavement Resurfacing – B51 Millhouses

20 January 2017

We are due to start pavement resurfacing work in your area **February 2017** and need to close the roads we are working on in order to carry out the work safely. Details of the roads affected can be found overleaf along with working hours.

As our schedule is heavily dependent on the weather we are unable to give an exact start date for the work at this time. Please look out for the temporary road signs that will be displayed five days before work starts, confirming the dates of work and parking restrictions.

Parking and access arrangements

There will be no on-street parking or vehicle access to properties on the roads we are working on, during working hours. Most roads will be open and on-street parking will be as normal at other times. Please let our on-site supervisor know if you need vehicle access to your property for urgent reasons. Pedestrian access and access for emergency vehicles will be available at all times.

Vehicles left on-street during restrictions may be towed away and you will need to pay a fee to have your vehicle released.

Please note that the schedule is heavily dependent on the weather and can be affected by unforeseen circumstances. Temporary road signs will be updated to reflect any changes.

We apologise for any inconvenience this may cause. For the latest updates please visit <http://www.sheffield.gov.uk/millhouses> or follow on Twitter @sccstreetsahead #SAB51

| Road Name | Working hours |
|--|---------------|
| Springfield Glen | 7am – 7pm |
| Springfield Close | 7am – 7pm |
| Springfield Avenue | 7am – 7pm |
| Oliver Road | 7am – 7pm |
| Sunningdale Mount | 7am – 7pm |
| Hurlingham Close | 7am – 7pm |
| Banner Cross Road – Section between Woodholm Place and Button Hill | 7am – 7pm |
| Dunkeld Road – Even side of road only | 7am – 7pm |
| Woodholm Place | 7am – 7pm |
| Woodholm Road | 7am – 7pm |
| Mylnhurst Road | 7am – 7pm |
| Silver Hill Road | 7am – 7pm |
| Button Hill | 7am – 7pm |
| Kinglsey Park Grove | 7am – 7pm |
| Kingsley Park Avenue | 7am – 7pm |
| Millhouses Lane | 7am – 7pm |
| High Wray Close | 7am – 7pm |
| Grange Cliffe Close | 7am – 7pm |

Please note the roads will only be closed on certain days during the stated work period and not the full duration.

27th January 2017

We are raising money for bluebell wood children's hospice in support of finding cures for diseases and to give the children a happier life.

Last year we raised £460 which helped a persons life!

Make a difference by having one of these tasty treats.

Bluebell Wood CHILDREN'S HOSPICE



WHAT WE ARE SELLING





Mother of God and St. Wilfrid's

Little Church

Our children's liturgy sessions take place during 10am Mass on the second and forth Sunday of the month in term time. Children are welcome to join us from the age of 4 until they have made their First Holy Communion. To ensure that we can deliver the most fulfilling sessions for the children, we would request that parents do not attend, other than for an initial settling in session or two. This will enable parents to get the most out of the Mass and help us to ensure the Safeguarding of all children. All of the leaders have the relevant Safeguarding (DBS) checks required by the Diocese. On a practical note, if your children are attending the session, it would be helpful if they remain downstairs at the beginning of Mass as this helps us to start promptly. As always, we would welcome new volunteers. Please speak to one of the leaders if you would like more information.

